

## ADDRESSING UN SDG 11 - SUSTAINABLE CITIES AND COMMUNITIES: UCD students working with society to develop more inclusive urban environments in Dublin City Centre.



### This module:

- increases the attractiveness and footfall in under utilised urban laneways.
- enhances safety and security.
- adopts a collaborative and partnership-based approach to the development of more inclusive and safe cities for urban citizens, particularly children and older people.
- builds capacity and skill across a range of stakeholder groups to support a more sustainable and inclusive city.

## QUICK FACTS

**Lecturer:** Prof. Niamh Moore Cherry

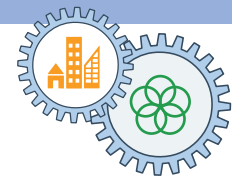
**Dept./School:** School of Geography, University College Dublin

**Module Title:** Re-Imagining Dublin: An interdisciplinary exploration in urban regeneration

**Community Partners:** A Playful City and Sean Harrington Architects

**Purpose of Partnership:** The purpose of the partnership was to empower students to develop the skills to actively contribute to shaping their urban environments. From the perspective of A Playful City, this module provided a way for them to build capacity to further their agenda on developing more inclusive urban environments.

**Weblink:** <http://bit.ly/ReImaginingDublin>



## CONTEXT

Dublin, the capital city of Ireland, has undergone dramatic transformations over the last three decades. Amidst all of this change, many argue that the liveability of the city has been reduced as large scale commercial developments take precedence in city centre spaces.

Like many other cities globally, how to balance economic

development and create more sustainable and inclusive cities is a difficult task. Reimagining cities as more playful, engaging and inter-generational spaces, particularly through re-animating under-used spaces, requires particular skillsets and approaches but can play a major role in delivering more sustainable cities and communities.



## DETAILS OF COMMUNITY ENGAGED LEARNING PROJECT

Urban Environment postgraduate students will likely be the next generation of policymakers shaping towns, cities and rural areas across Ireland and beyond. This module aimed to provide students with the opportunity, alongside key community stakeholders in the city, to build the skillsets and competencies necessary to be effective and considerate professionals and urban citizens. In 2018, Niamh formed a partnership with A Playful City and Sean Harrington Architects to provide students with an opportunity to work on a live project undertaking community consultations and developing creative ideas for how specific areas in Dublin could be reimagined. A Playful City is a not-for-profit organisation that advocates for more liveable and inclusive cities and they work closely with Sean Harrington Architects to develop innovative approaches to shaping their much-loved city.

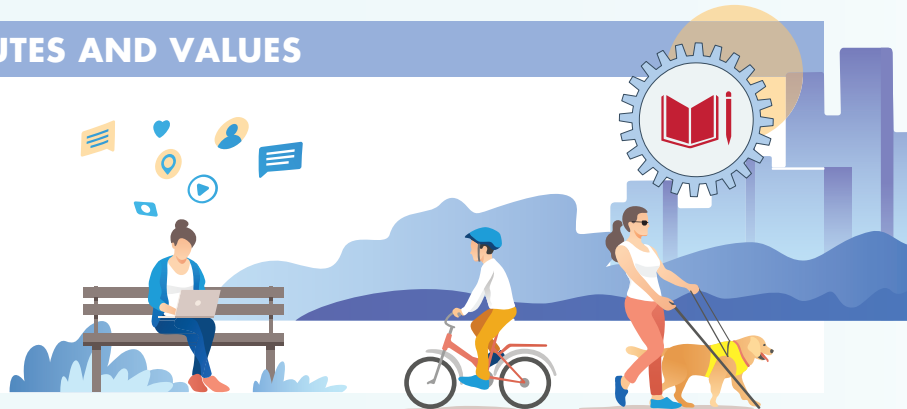
A Playful City led student training on consultation practices, the ethics of participation and networked students with businesses, residents, the Gardaí, local authority, and urban activists. This ensured that students became aware of, and could consider, the diversity of individuals and interests that have a stake in shaping the future city. Students focused on under-utilised laneways in Dublin 1, a desired focus for reactivation by the city council. In groups, they carried out

on-street consultations with the general public and business owners. Students developed proposals for their designated space which were presented through an end-of-term showcase to the community partners and invited representatives from organisations such as Dublin City Council and Dublin Town business organisation. Students' presentations are assessed by community attendees and they are provided with feedback. Students' ideas have been included as part of developer proposals such as the Clery's Quarter in Dublin and their work was also a direct input into Dublin City Council's 'Dublin One Laneways Strategy'. Students' innovative input into their city's future provides a focal point for a diversity of urban stakeholders to foster their own collaborations and extend their interactions.

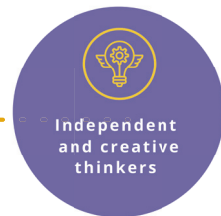
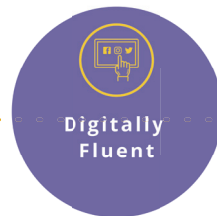


## DEVELOPING GRADUATE ATTRIBUTES AND VALUES

In this UCD Community Engaged Learning initiative, students developed skills in knowledge co-creation as well as analytical skills to evaluate the range of perspectives on urban development that they uncovered through surveys, interviews and fieldwork. Through the final showcase, students learnt how to communicate ideas to a diverse audience of academics, policymakers and urban activists.



## GRADUATE ATTRIBUTES AND VALUES ACQUIRED THROUGH THIS PROJECT



## ABOUT

Campus Engage is working to bring higher education teaching staff, students, and communities together to address societal challenges through the curriculum. The Campus Engage Steering Committee and the National Forum for the Enhancement of Teaching and Learning are grateful to Dr Ruth Hally, Civic Engagement Coordinator, UCC who led this project. This case study

was written by Dr Hally, with Associate Professor, Niamh Moore-Cherry and Assistant Professor, Deirdre McGillicuddy, UCD; and was informed by the UCC Graduate Attributes Programme Framework, funded by the Higher Education Authority and the Tomar Trust.

**For more information go to:**  
[www.campusengage.ie](http://www.campusengage.ie)