

# COMMUNITY ENGAGED LEARNING: AN ONLINE COURSE FOR TEACHING STAFF

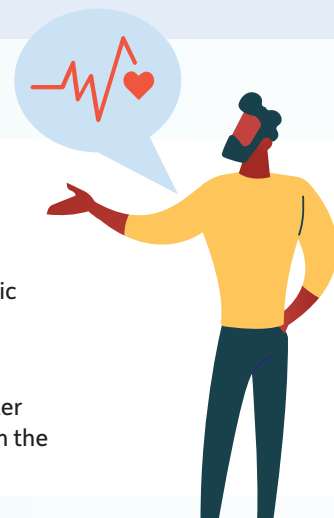
*Your students addressing real world problems through the curriculum*



## THE COURSE

This Campus Engage Community Engaged Learning professional development short course is an introductory programme for teaching staff in higher education. This course explores the basic concepts and practical steps on how to integrate community engaged learning into any teaching curriculum. The course is built around a series of video tutorials, solo and group activities, a selection of academic and grey reading material, and online case studies with community partners, students and academics.

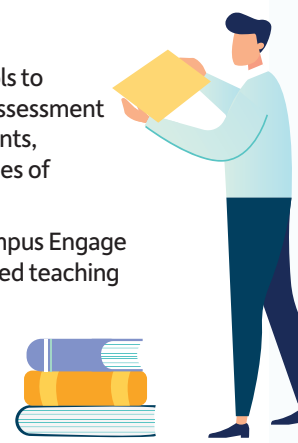
This course is 25-hours learner effort and is undertaken over a 6-week period, after which learners can claim their digital badge in Community Engaged Learning from the National Forum for the Enhancement of Teaching & Learning (NFETL).



## WHY CEL?

### Why you should take this course?

- Enhance your teaching by providing students with practical experience of applying academic learning in a real-world setting with community-based organisations.
- Contribute to students learning outcomes across citizenship, team work, effective communication, leadership, empathy and enhance their social capital.
- Network with community partners to open up new learning and research projects, interdisciplinary funding opportunities, or publications. No prior experience with community organisations is necessary to take this course.
- Walk away with a plan and tools to develop learning outcomes, assessment techniques, learning agreements, process guides, and case studies of successful projects.
- Become part of a national Campus Engage network of community engaged teaching and research practitioners.
- Get recognition of your CEL activities for institutional promotional criteria



### National Professional Development Framework

The CEL course is underpinned by the NFETL Professional Development Framework. For more information on the framework, its domains and their elements, please go to [teachingandlearning.ie](http://teachingandlearning.ie)



## What is Community Engaged Learning (CEL)

Community engaged learning is a form of experiential education with a community engagement for societal impact underpinning. Students gain academic credit for engaging and reflecting on a learning experience or piece of research in partnership with a community organisation. This allows students to explore 'real life' problem solving, their future role as a professional, and how they can contribute to address Irish, EU and international societal challenges.

Existing examples include law students providing legal advice to the public in their local community law centres; engineering students working with older people to design innovative occupation support tools; or dietetics students giving nutrition workshops with local school students.



# COMMUNITY ENGAGED LEARNING: AN ONLINE COURSE FOR TEACHING STAFF

*Your students addressing real world problems through the curriculum*



## COURSE BREAKDOWN

### Pre-course content

Introduction to the course, the virtual learning environment and your course colleagues.

### Week 1

#### Community Engaged Learning - Introduction and Rationale

Explore the definitions and characteristics of community engaged learning in Ireland, with case study examples.

### Week 2

#### Community Partnerships

How to build and sustain working relationships with community groups with a partnership approach to support Community Engaged Learning.

### Week 3

#### Embedding Community Engaged Learning in the Curriculum

Explore the various curriculum design options as you embed CEL and consider how to write learning outcomes for CEL.

### Week 4

#### Engaging Students

Consider the key information students require about CEL. The focus is on preparing students to engage effectively in CEL activities.

### Week 5

#### Assessment of Community Engaged Learning

How to assess if students have achieved the intended learning outcomes of their CEL experience.

### Week 6

Claiming your NFETL Digital Badge in Community Engaged Learning

# 1

### Videos

A selection of video case studies taken from across Irish Higher Education showcasing the variety and diversity of CEL in Ireland.

# 2

### Tutorials

Narrated presentations introducing learners to the background and concepts of CEL.

# 3

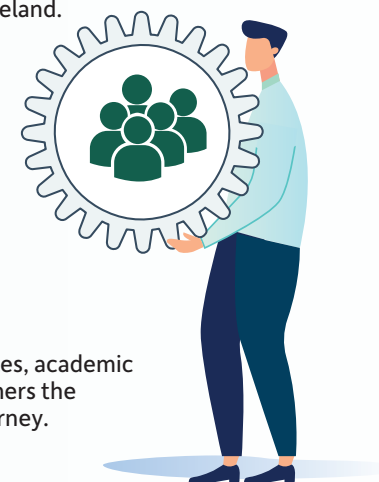
### Activities

Solo and group activities to help learners understand the basics of CEL and explore how they can implement CEL into their own teaching and learning.

# 4

### Reading

A collection of practical how-to guides, case study examples, academic literature and practitioner literature designed to give learners the theoretical and practical information to start their CEL journey.



### About Campus Engage

Based within the Irish Universities Association, Campus Engage is dedicated to supporting Irish higher education institutions to embed, scale and promote civic and community engagement across staff and student teaching, learning and research.

For more information on Campus Engage, please visit [campusengage.ie](https://campusengage.ie)



**NATIONAL FORUM**  
FOR THE ENHANCEMENT OF TEACHING  
AND LEARNING IN HIGHER EDUCATION