



Recognition of
Prior Learning
Your Learning Counts



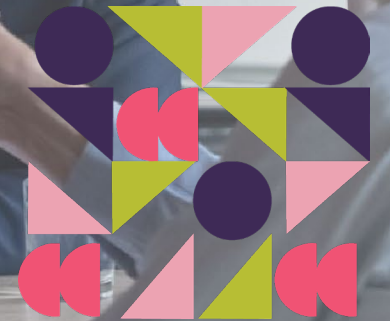
25 Hours Required
Recognised Learning



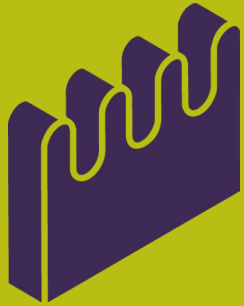
Participant @ManoothUni

During my career, I have worked across multiple industries which have allowed me to see how change can be driven, designed, and facilitated. RPL has a major role to play in this process.

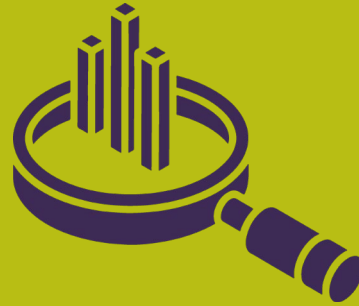
Realise your team's Potential with #RPL for Enterprise



Purpose of the National RPL in Higher Education Project:



Embed & Streamline



Enhance Sector's
Capacity



Partner & Promote
with Employers



Recognition of
Prior Learning
Your Learning Counts

What is RPL?

- **Recognition of Prior Learning (RPL)** is a process by which prior learning is formally **valued**.
- ‘Prior learning’ can be learning gained ‘on the job’, through training or in life.
- RPL is for **everyone**.



What is RPL for Enterprise?

When HEIs and Enterprise come together in partnership to:

- ✓ Give value to informal and nonformal workplace learning in the context of the NfQ.
- ✓ Utilise 'invisible' learning as a bridge to a new learning opportunity.
- ✓ Upskill/reskill groups of workers in line with their needs and needs of the organisation.

Value Meaning:



- ✓ Credit towards an award (qualification) or exemptions from some programme modules
- ✓ Advanced entry to a programme
- ✓ Full Award
- ✓ Entry to a programme

Benefits for SMEs:



**Meet skills
needs faster**



**Widens the
talent pool**



**Enhances career
progression &
employee
satisfaction**



**Supports talent
retention**



**Recognition of
Prior Learning**
Your Learning Counts

Ronan Horgan, SME owner & CEO (Capitalflow)





Recognition of
Prior Learning

Your Learning Counts

Thank you!

Find out more about RPL opportunities
at www.priorlearning.ie



Human
Capital
Initiative

iaua

IRISH
UNIVERSITIES
ASSOCIATION

