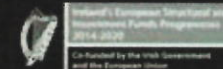
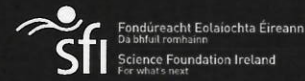


A World Leading SFI Research Centre

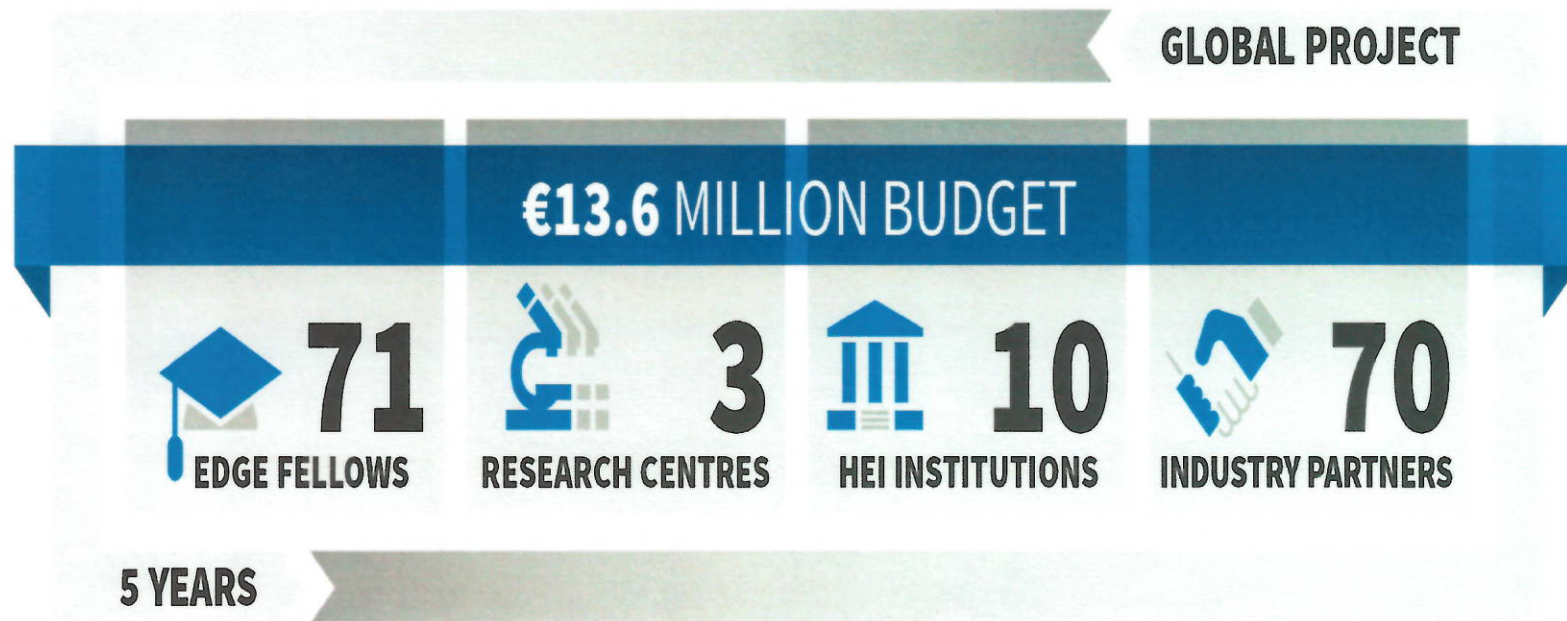


Identifying the EDGE: Developing a distinctive, large scale COFUND programme

Dr Máire Brophy



Background



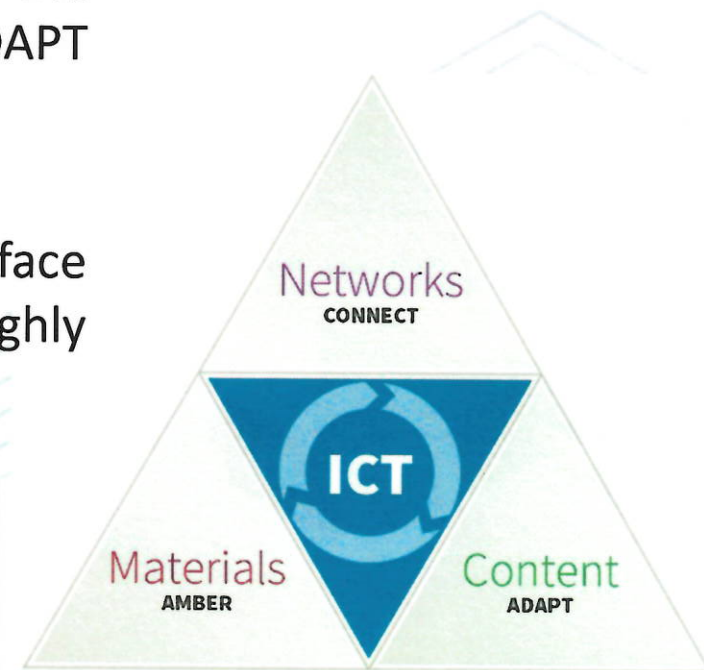
Interdisciplinarity

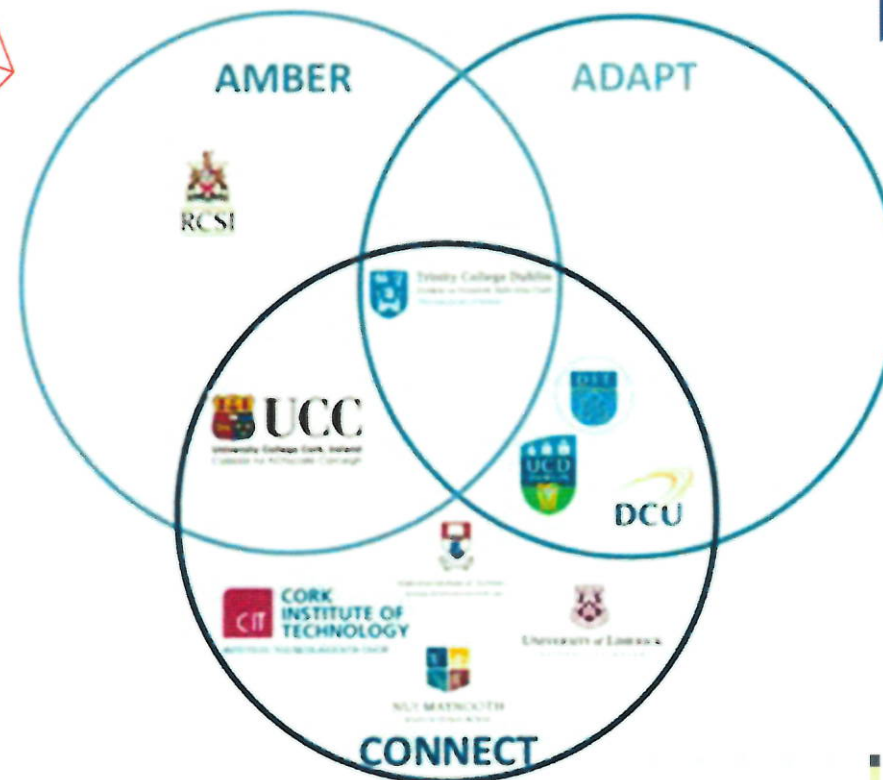


AMBER offers expertise in advanced materials that will play a pivotal role in future systems and devices.

CONNECT's focus is on future networks that will underpin the services the world needs and ADAPT brings cutting-edge expertise in digital content.

EDGE researchers will work at the interface between these Centres and will generate highly interdisciplinary projects, adding value to all.

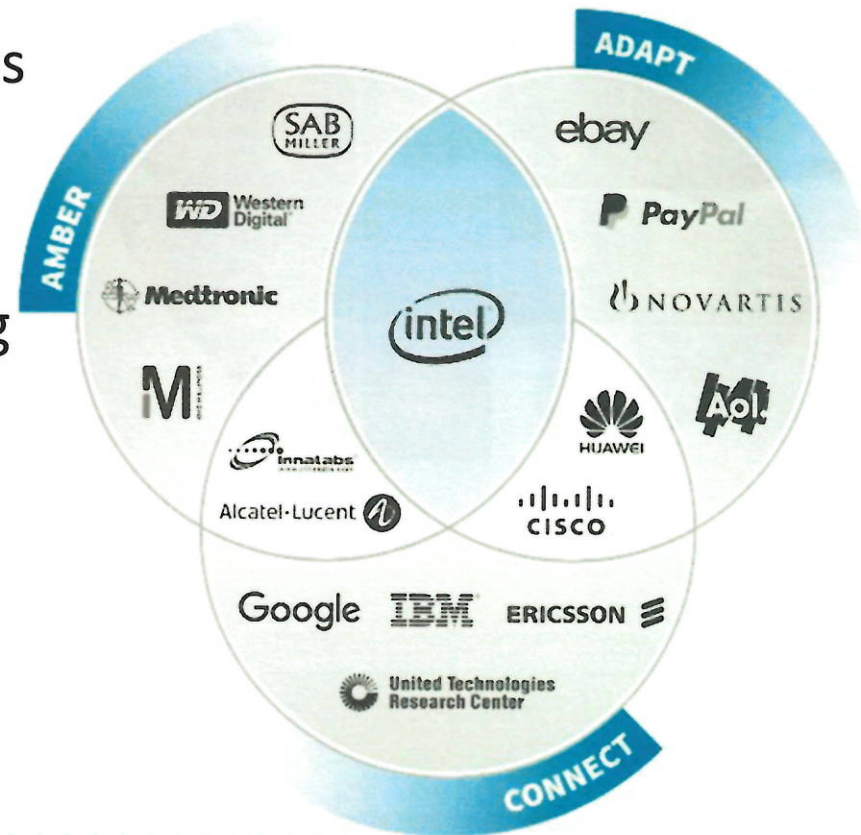




Research driven but with industry context



- A core part of career development for ICT fellowships
- Not limited to scientific application
- Development an understanding of industry needs as an important transferable skill
- Secondments
- Training



Gender in EDGE



Initial plans

- PR Strategy
- Images
- Gender balance in reviewers
- Reducing unconscious bias

Structural issues

- Maternity leave



Evolution



Gender Decoder for Job Ads

Be part of the Next Generation
of **ICT** Research Leaders

Marie Skłodowska-Curie postdoctoral fellowships in Ireland

Call opens September 2016

REGISTER YOUR INTEREST NOW

Email us at EDGE@tcd.ie



Join our Leading Community
of Next Generation
ICT Researchers

Marie Skłodowska-Curie postdoctoral fellowships in Ireland

Call open **NOW** — apply by November 1st

REGISTER YOUR INTEREST NOW

Email us at EDGE@tcd.ie



Information for you (and your family) about working in Ireland

As a researcher on a specific purpose employment contract, you have the rights of a public sector worker entitled by Irish law. This includes sick leave, maternity / paternity and parental leave, access to state and other types of pension, public healthcare and access to private healthcare through insurance. You may also avail of many other benefits including welfare payments for children and for carers, and tax-incentive schemes on cycle to work and public travel.

Each of the EDGE host institutes provide comprehensive employee services for staff welfare and development. You can find links to these [here](#).

A World Leading SFI Research Centre



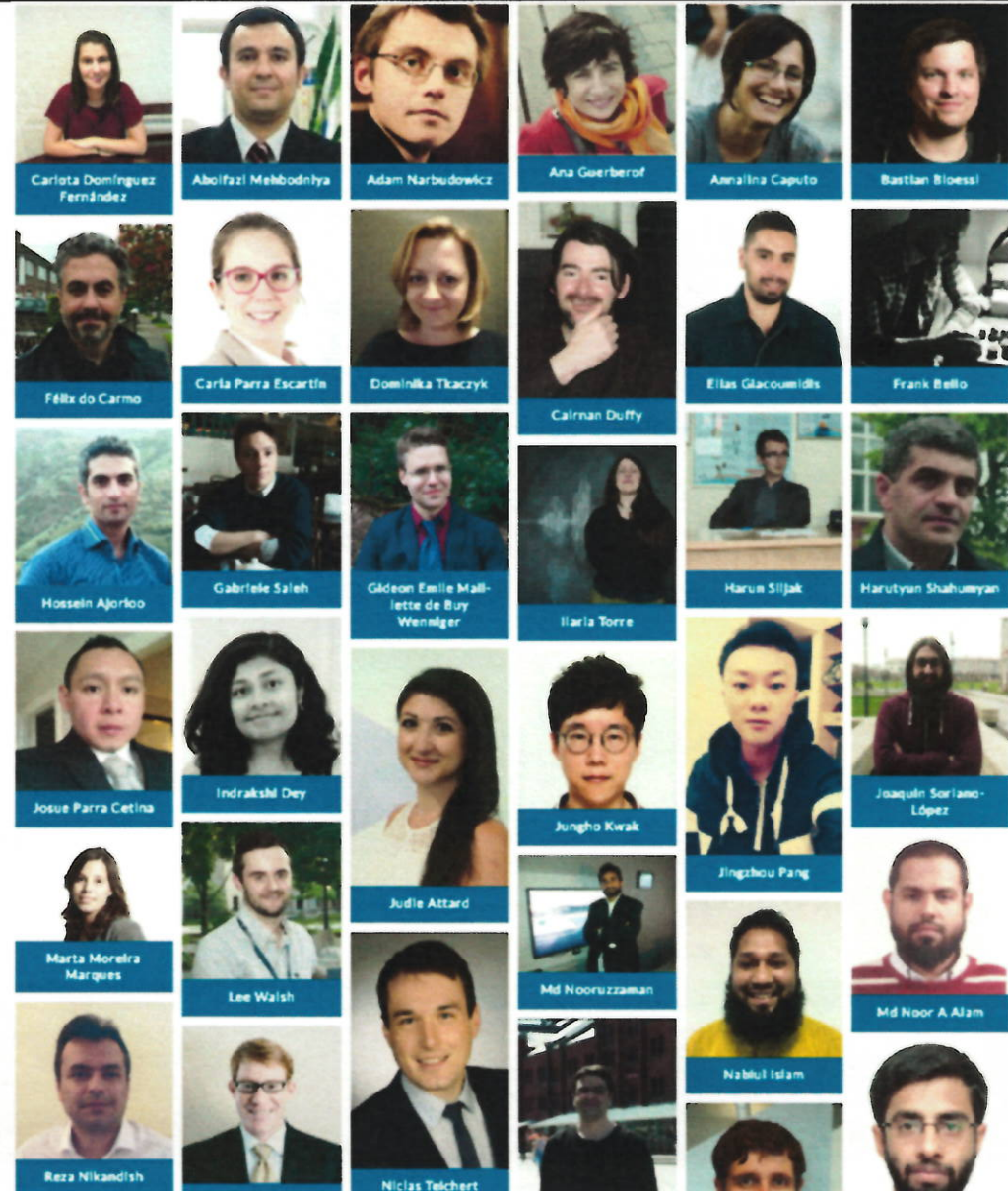
SCHOLARS AT RISK N E T W O R K



Belonging



- Sense of being on a programme
- Fellows all over the country
- bringing them together for training and social events
- Peer support
- Cross pollination of ideas



It takes a village!



- Core writing team – original proposal
- Programme management team
- Centre liaisons
- Executive Steering Committee
- Advisory Board

EDGE Programme Management



Kevin J Fraser

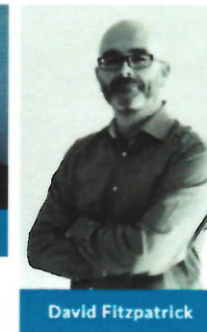


Linda Ryan

Centre Funding Liasons



Máire Brophy



David Fitzpatrick



Deirdre Caden

Executive Steering Committee



Linda Doyle

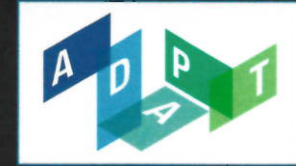


Michael Morris



Vincent Wade

Innovative training programme



1:1 Coaching and Mentoring	EDGE transferable Skills programme	Pathways to Funding programme	Creative Arts Practices	Interdisciplinary Networking
<p>Coaching - Provides opportunity for Fellows to plan and take personal ownership for the career pathway and advancement.</p> <p>Mentoring - provides an added layer to development through a connection outside of the manager / supervisor line, thus creating a relationship solely for the benefit of the mentee and their career.</p>	<ul style="list-style-type: none"> • Developing professional researchers networks • Building positive relationships • Managing Finance for Research Projects • Personal Impact & Influence • Communicating your Science • Management and supervisory skills • STEAM/ Interdisciplinarity workshops 	<p>PWTF provides the fellows with specific knowledge and information in relation to current and future calls (mainly H2020) and trends in the funding sphere, and also provides them with opportunity to meet centre funding managers and national contact points directly. Recent topics covered:</p> <ul style="list-style-type: none"> • Gender • Open science • Ethics • Interdisciplinarity 	<p>Provides opportunities for networking, reflection on opportunities, issues and barriers and looking at research from other perspectives. Supports the researchers in exploring STEAM concepts and ideas. The "Stranger Fictions" writing workshops provides space for Fellows to flex their creative writing skills in a non judgemental and collaborative environment.</p>	<p>Regular meetings with other similar programmes such as Trinity Long Room Hub Fellows (a COFUND) and GBHI Brain Fellows where they are encouraged to discuss their research, new project ideas, share experience as a mobile researcher and increase collaboration opportunities.</p>

Lessons learned



Look for core challenges

Appeal to fellows

Room for evolution

